

Phone: (352) 374-5245

## Parks and Conservation Lands

The Alachua County Parks Office is responsible for the design, development, and maintenance of the County park system. Additional responsibilities include the administration of state and federal grants, maintenance agreements, management and securities agreements, construction contracts and programmed recreation contracts. The park system consists of 25 parks and the current Fairgrounds with a total of 1206 acres and an additional 11 acres of Gainesville Regional Utilities' (GRU) property known as Chapman's Pond.



### **Florida Co-Champion Live Oak at Cellon Oak Park**

Circumference = 360 inches (30 feet)  
Average crown spread = 160 feet  
Height = 85 feet

### MISSION STATEMENT

*Parks and Conservation Lands: To acquire and provide stewardship of environmentally significant lands and parks to protect, maintain and improve natural resources and diverse recreational opportunities for current and future generations.*

### PARK AND RECREATION GOALS

To meet our mission, short, intermediate and long-term goals have been established:

#### Short Term (0-2 years)

- Implement a standardized level-of-service for county maintained parks to include frequency of mowing, painting and field chemical applications.
- Continue to improve parks and facilities as approved through the five-year capital improvement projects list including the addition of restrooms to Squirrel Ridge, Lake Alto, Santa Fe Lake and Marjorie Kinnan Rawlings Parks; renovating the Poe Springs Park restroom and Owens-Illinois Park boardwalk and fishing pier.
- Establish a method of tracking park usage (i.e. vehicle counters).
- Utilize technology to document maintenance (i.e. work order system).
- Utilize technology to offer online rentals and accept payments.
- Continuously review and update the Parks and Recreation web page for relevance.
- Implement social media (i.e. Facebook and Twitter) to increase awareness of parks.
- Cultivate private / public partnerships (i.e. leagues, 501(c)3 groups and other government agencies).
- Implement Parks Ranger positions to provide a clear career path for staff, which focuses on customer service, park related certifications (i.e. Certified Playground Safety Inspector and Certified Parks and Recreation Professional) and cash handling.
- Continuously review fees to increase revenues and offset expenditures.
- Evaluate the Parks Master Plan Regional Trails projects to increase multimodal opportunities in partnership with the Alachua County Environmental Protection Department.
- Implement Energy Conservation Strategies Commission (ECSC) recommendations including:
  - The development of community gardens in parks.
  - The installation of solar panels for park restrooms and other structures.



- The evaluation of other energy conservation measures in parks including reclaimed water for irrigation, waterless urinals, low energy field lighting, green chemicals, recycled paper products, recycled amenities (i.e. picnic tables and benches) and more.
- Work with Solid Waste & Resource Recovery to improve recycling efforts / collection in parks.

#### Intermediate (3-5 years)

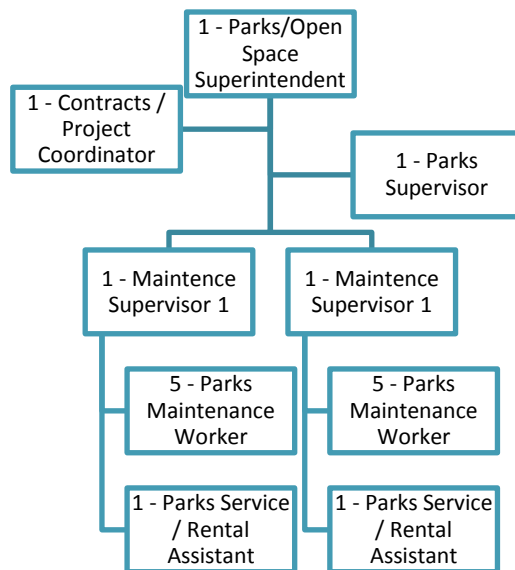
- Implement a differential level-of-service for high use parks including; Rotary Park at Jonesville, Veterans Memorial Park, Poe Springs Park and Alachua County Fairgrounds.
- Review and update the adopted Recreation Master Plan, with input from the Recreation and Open Space Advisory Committee.
- Install edible fruit trees and shrubs in parks.
- Begin implementation of the Regional Trails program.

#### Long Range (6-10 years)

- Implement the Recreation Master Plan.

#### PARK AND RECREATION PERSONNEL MATRIX

- Alachua County Parks Division has 15 full-time employees (FTE's) and 2 part-time employees.



#### COMMUNITY INVOLVEMENT

High quality of life, progressive ideals and natural beauty defines Alachua County. There is a strong spirit of volunteerism, community, and collectivism that strives for a better future. The role of parks and gardens in a community goes beyond the traditional view of parks as just places to play, exercise, relax, and preserve the environment.

- Parks are integral to creating socially, environmentally and economically healthy communities.
- Community gardens increase residents' sense of community ownership and stewardship, provide a focus for neighborhood activities, expose inner-city youth to nature, connect people from diverse cultures, reduce crime by cleaning up vacant lots, and build community leaders.



#### Recreation and Open Space Advisory Committee (ROSCO)

The Recreation and Open Space Advisory Committee (ROSCO) is a Board of County Commissioners Advisory Committee which has the following responsibilities

- Establish an annual work program for the committee
- Engage in an annual review of the Capital Improvement Project list pertaining to recreation projects and open space element update
- Assists and advises on future policies and directions concerning recreation and open space projects for Alachua County
- Assist and advise on future policies and directions concerning preservation of green space, use of green space for recreation areas and protection of environmentally sensitive lands
- Assist in promotion community awareness of the recreation and open space projects that are being considered by the Commission

The committee has nine members; eight citizens (one is an alternate); one City of Gainesville representative and one Alachua County School Board representative

#### COMPLETED AND CURRENT PROJECTS

- Squirrel Ridge Park
  - Construction of a restroom
- Fairgrounds
  - Additional new pole barn completed
- Rotary Park at Jonesville
  - Construction of additional Play System
  - Perimeter soccer field fencing completed

#### MAINTENANCE, MANAGEMENT AND SECURITY AGREEMENTS

- One Access Control Agreement for Cellon Oak Park
- Maintenance Agreements
  - One Maintenance Agreement for the Veteran's Memorial at Kanapaha Park
  - One Maintenance Agreement for Police Memorial at Kanapaha Park
  - One Athletic Field Maintenance Contract for Veterans memorial Park, Forest Park, and Rotary Park at Jonesville
  - Three Janitorial Maintenance Agreements for the daily cleaning of 12 park restrooms
- Management Agreements
  - One Tennis Complex Management Agreement for Rotary Park at Jonesville
  - One Management Agreement with the North Florida Botanical Society for Kanapaha Botanical Gardens
  - Two Ball Field Management Agreements
    - One for Veterans Memorial Park
    - One for Rotary Park at Jonesville
  - Four Soccer Field Management Agreements
    - One for Cynthia Moore Chestnut Park & Clark Butler Nature Preserve
    - One for Forest Park
    - One for Veterans Memorial Park
    - One for Rotary Park at Jonesville
- One Mowing Contract for mowing all County Parks
- Two Security Agreements providing a mobile home site at two County Parks

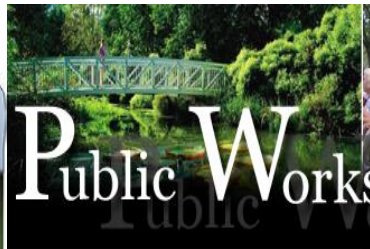


## COUNTY PARKS

Each one of our parks has their own unique and amazing qualities. We challenge each and every one of you to visit all of Alachua County's parks, learn their history and have some fun.

- For more detailed information about each park, please visit us at:  
<http://www.alachuacounty.us/Depts/PW/ParksandRecreation>
- Phone: (352) 374-5245
- E-Mail [parks@alachuacounty.us](mailto:parks@alachuacounty.us)





# Public Works

Phone: (352) 374-5245

ALACHUA COUNTY PARKS	ACRES	ADDRESS	Ball Field	Basketball	Volleyball	Tennis	Soccer	Roller Hockey	Multi-Purpose	Playground	Off-Leash	Swimming	Picnic Area	Picnic Shelter	Fitness Trail	Nature/Hiking	Nature Study	Fishing	Boat Ramp	Center	Restrooms
Cellon Oak (Nature)	6	410 NW 169 <sup>th</sup> PL Gainesville 32653															1				
Copeland (Neighborhood)	5	7020 NE 27 <sup>th</sup> Ave Gainesville 32609	1	1	1					1			1	1							1
Cynthia Moore Chestnut Park and Clark Butler Nature Preserve (Neighborhood)	27	2315 SE 35 <sup>th</sup> St Gainesville 32641		2	1				1	1			1	1		1					1
Earl P. Powers (Special Use Resource)	12	5910 SE Hawthorne Rd Gainesville 32641								1			1	1			1	1	2		1
Forest ( Dog Park) (Community)	24	4501 SW 20 <sup>th</sup> Ave Gainesville 32607		2	2		3			1				2							1
Grove (Neighborhood)	4	6300 SE 152 <sup>nd</sup> St Hawthorne 32640	1	1						1			1	1							
High Springs Boat Ramp (Special Use Resource)	.25	End NW 210 <sup>th</sup> Ln High Springs 32643																	1		
Holden Pond (Special Use Resource)	5	9725 Holden Park Rd Hawthorne 32640												1					2		
Kanapaha Botanical Gardens (Special Use Resource)	62	4800SW 58 <sup>th</sup> Drive Gainesville 32608											1	18		1	1				1
Kanapaha Lake (Undeveloped) (Nature)	453	None																			
Lake Alto (Special Use Resource)	22	17800 NE 134 <sup>th</sup> Place Waldo, 32694											1	1			1	1	2		
Lochloosa (special Use Resource)	1	16204 SE 207 <sup>th</sup> Lane Hawthorne 32640											1	1			1	1	2		1
McCall (Undeveloped) (Nature)	78	25219 NW 210 <sup>th</sup> Lane High Springs 32643														1	1				
Melrose Boat Ramp (Nature)	.25	End of Trout Street Melrose 32666																	1		
Marjorie K. Rawlings (Special Use Resource)	12	18800 S CR 325 Cross Creek 32640								1			1	1			1	1	2		1
Monteocha (Neighborhood)	5	803 NW 192 <sup>nd</sup> Ave Gainesville 32609	1	1	1					1			1	1							1
Owens-Illinois (Special Use Resource)	22	11309 SE 16 <sup>th</sup> Ave Windsor 32641								1			1	1			1	1	2		1
Poe Springs (Regional Resource)	202	28800 NW 182 <sup>nd</sup> Ave. High Spring 32643	1		2					1	1	1	1	4		1	1	1	1		1
Rotary Park at Jonesville (Regional Resource)	87	14100 NW 32 <sup>nd</sup> Ave Gainesville 32606	4			14	6						1	1	1						3
Santa Fe Lake (Special Use Resource)	25	24500 NE SR 26 Melrose 32666							1	1			1	2			1		2		1
Scott Phifer House (Historic)	3	5600 SE 155 <sup>th</sup> St Hawthorne 32640																			
Squirrel Ridge (Dog Park) (Community)	17	1603 SW Williston Rd Gainesville 32608					1			1	1										
SW Advocacy Group	.5	807 SW 64 <sup>th</sup> Terrace Gainesville 32607								1											
Veterans Memorial Park (Community)	34	7400 SW 41 <sup>st</sup> Place Gainesville 32609	1	1	2		2	1		2			1	3	1	1	1			1	1
Watermelon Pond (Special Use Resource)	12	10700 SW 250 <sup>th</sup> ST Newberry 32669																1	1		